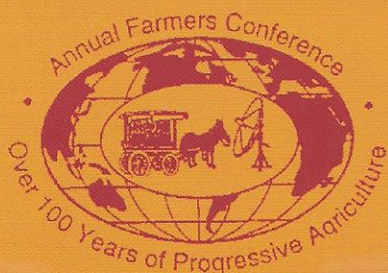


TUSKEGEE UNIVERSITY

One Hundred Sixteenth Annual **Farmers** CONFERENCE

*“Building Hope and Empowering Alabama’s
Rural Communities for the Future”*



February 21-22, 2008
Kellogg Hotel and Conference Center
Tuskegee, Alabama

2008 MERIT FARM FAMILY AWARD



The Donald Means Family Eutaw, Alabama

Tuskegee University Cooperative Extension Program
Greene/Hale Counties

Gwendolyn Johnson, County Agent

The first Farmers Conference was held at Tuskegee University on February 23, 1892. The purpose was to arouse public sentiment among the farmers and create a real interest in the common, mundane and practical affairs of life. The morning was spent identifying problems, while the afternoon portion of the conference focused on solutions. Today, this conference's main focus is still on the problems and solutions for small-scale farmers, landowners, and their communities in managing change in agriculture.

The objectives for this year are: (1) to share up-to-date information relevant to small-scale farmers and landowners involved in production of traditional and alternative agricultural products; (2) to create awareness about family health, nutritional challenges, and existing resources for rural families; (3) to provide research-based information in a consumer adaptable format; and (4) to strengthen networks and partnerships that address problems of small-scale agriculture and rural communities with respect to local, national and global markets.

History and Purpose

The Annual Farmers Conference evolved in 1892 out of a need to improve the conditions of rural black farmers in the South. Having just gone through slavery, black farmers in the South had a wealth of social, economic, educational and morale problems that desperately needed attention.

After observing these conditions upon his arrival at Tuskegee, Booker T. Washington developed and implemented monthly group meetings for the farmers. Those monthly group meetings of approximately 75 people were the stepping stones to the first Annual Farmers Conference, held in 1892, which drew a crowd of over 400 farmers and professional agriculture workers from all areas of the rural South.

The Annual Farmers Conference represented not only the pioneering spirit of Tuskegee University, but the real beginning of agricultural extension in the South. Historical milestones associated with this conference include: the appointment of Thomas Monroe Campbell as the first extension agent in the United States, the development of Tuskegee University's movable school, and the establishment of the agricultural experiment station and cooperative extension program.

Since the appointment of Campbell in 1906, Cooperative Extension at Tuskegee University grew from one county agent covering Macon and surrounding counties to 12 agents serving 12 counties in a region known as the Black Belt of Alabama. Extension educators offer assistance in a variety of program areas such as youth leadership development, environmental health and water quality, alternative agricultural enterprises, economic development, forestry and natural resources, health and nutrition, and family well-being.

The goal of the annual farmers conference is to enhance the overall quality of life for our constituents and their families and, where possible, impact in a positive way the opportunities which are available.

THURSDAY, FEBRUARY 21, 2008

8:30 a.m. Registration (Conference Registration Desk)

9:00 a.m. - 4:30 p.m. Exhibits and Health Fair Open

10:00 a.m. – 11:30 a.m. Tuskegee University Cooperative Extension Program
State Advisory Council Meeting

11:30 p.m. – 12:30 p.m. Opening Luncheon (Ballroom B)
Dialogue on Farm Energy Management: “Slaying the Energy Cost Dragon”

Presiding: Barrett T. Vaughan

College of Agricultural, Environmental and Natural Sciences
Tuskegee University

Speaker: Dave Ryan, Senior Energy Engineer

National Center for Appropriate Technology
Butte, Montana

1:00 a.m. - 3:00 p.m.. Conference Tour and Workshops

FORESTRY MANAGEMENT TOUR (EDWIN DAVIS PROPERTY – TALLAPOOSA COUNTY)

Presiding Ronald C. Smith, Extension Forester
Tuskegee University Cooperative Extension Program

Presenting **Edwin Davis, Land Owner**

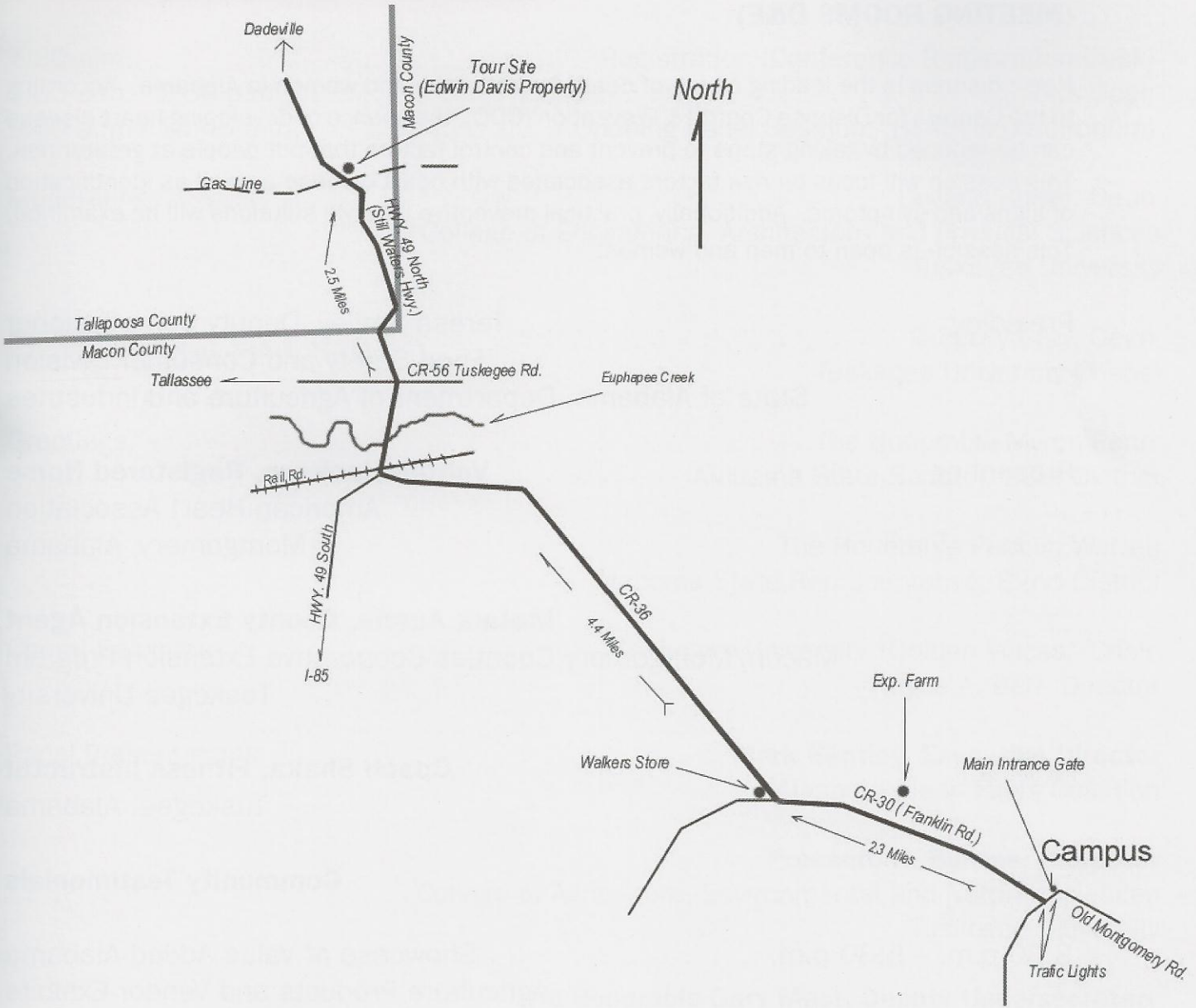
Bob Montgomery, County Manager
Macon County, Alabama Forestry Commission

Gwen Lewis, District Conservationist
USDA, Natural Resources Conservation Service

Elijah Moore, District Conservationist
USDA, Natural Resources Conservation Service

Schedule

MAP TO EDWIN DAVIS' PROPERTY



PLASTICULTURE PRODUCTION AND MARKETING WORKSHOP (G.W. CARVER AGRICULTURAL EXPERIMENT STATION – FRANKLIN ROAD)

PresidingWalter Baldwin, County Extension Agent
Macon/Montgomery Counties
Tuskegee University Cooperative Extension Program

Presenting Harold McLemore
Alabama Department of Agriculture and Industries

George Paris
Alabama Department of Agriculture and Industries

Schedule

**PREVENTATIVE HEALTH CARE AND LIFESTYLE MANAGEMENT
(MEETING ROOMS D&E)**

Heart disease is the leading cause of death for both men and women in Alabama. According to the Centers for Disease Control & Prevention (CDC), the chance of developing heart disease can be reduced by taking steps to prevent and control factors that put people at greater risk. This session will focus on risk factors associated with heart disease as well as identification of signs and symptoms. Additionally, practical preventive lifestyle solutions will be examined. This session is open to men and women.

Presiding Teresa Smiley, Deputy Commissioner
Food Safety and Consumer Division
State of Alabama, Department of Agriculture and Industries

Presenting **Valtoria Jackson, Registered Nurse**
American Heart Association
Montgomery, Alabama

Metara Austin, County Extension Agent
Macon/Montgomery Counties Cooperative Extension Program
Tuskegee University

Coach Shaka, Fitness Instructor
Tuskegee, Alabama

Community Testimonials

3:30 p.m. – 5:30 p.m. Showcase of Value Added Alabama
Agriculture Products and Vendor Exhibits
Bulgar Creek Goat Cheese, Carson Ann Syrups, C&E Farms, Livings Honey Products,
Oakview Farms Granary, Rabbit Hoppers, The Cottage House, Tommy King Pecans,
Tuskegee Enology Club, Vonn’s Products, Wickles Pickles

5:30 p.m. – 6:15 p.m. Tuskegee Enology Club Reception (Atrium)

6:30 p.m. . . . Thomas Monroe Campbell Memorial Banquet (Ballrooms B & C)

Presiding Getchel L. Caldwell, II
Vice President for University Advancement
Tuskegee University

Speaker William E. “Billy” Powell
Executive Vice President
Alabama Cattlemen’s Association

Schedule

FRIDAY, FEBRUARY 22, 2008

7:30 a.m. Registration (Conference Registration Desk)
9:00 a.m. - 2:00 p.m.. Exhibits Open
9:00 a.m. - 10:45 a.m. Opening Panel Session: Biofuels (Auditorium)

Moderating Legand Burge, Dean
College of Engineering, Architecture and Physical Sciences
Tuskegee University

Invocation Gregory Gray, Dean
Tuskegee University Chapel

Greetings. The Honorable Myron Penn
Alabama State Senator, 28th District

The Honorable Pebblin Warren
Alabama State Representative, 82nd District

Choral Selection Tuskegee University "Golden Voices" Choir
Wayne A. Barr, Director

Panel Presentations **Mark Bentley, Executive Director**
Alabama Clean Fuels Coalition

Prosanto K. Biswas, Professor
College of Agriculture, Environmental and Natural Sciences
Tuskegee University

The Honorable Gary Mast, Deputy Undersecretary
Natural Resources and Environment
United States Department of Agriculture

The Honorable Mike Rogers, United States Congressman
3rd Congressional District, Alabama

PRESENTATION OF MERIT FARM FAMILY AWARD

10:45 a.m. - 11:00 a.m. Break (Auditorium Foyer)

11:00 a.m. - 1:00 p.m. Concurrent Sessions

1:00 p.m. - 2:30 p.m. Merit Farm Family Luncheon (Ballroom)

Presiding Anthony L. Holloman
Associate Vice President for University Advancement
Tuskegee University

Keynote Speaker Linda Casey, State Forester
Alabama Forestry Commission

Schedule

Session 1: Production and Marketing Opportunities (Meeting Rooms F)

Effective marketing strategies are essential to the success and sustainability of farm retail operations. Sessions participants will dialogue with marketing experts as they discuss helpful market trends and techniques that will address how producers can respond to current market situations.

Moderator:

Walter Baldwin, County Extension Agent
Tuskegee University Cooperative Extension Program

Presenters:

Plasticulture: Start Up Costs, Seeds, Plants
Harold McLemore
Alabama Department of Agriculture and Industries

Direct Marketing
Skipper Sullivan
Alabama Farmers Market Authority

EQUIP/NAP Assistance Programs

Benefits of Cooperative Marketing

Session 2: Ask the Energy Expert (Meeting Room A)

This dialogue on farm energy use, assessment, and management will include innovative ideas for reducing fuel and electric costs, as well as opportunities for farms to generate their own energy using biodiesel, wind turbines, or solar panels.

Moderator:

Barrett T. Vaughan
College of Engineering, Architecture and Physical Sciences
Tuskegee University

Presenters:

Dave Ryan, Senior Energy Engineer
National Center

Session 3: Technology Resources for Landowners (Computer Lab)

This session will discuss the Mobile Information Forestry Technology Forestry Programs for Limited Resources Landowners Project at 1890 Land Grant Institutions, initiated by Tennessee State University. The focus of the program is to conduct educational programs using their mobile information technology and distance education capabilities across the 1890s landscape. The project uses a combination of traditional landowner training workshops and on-site training using a mobile internet platform. Conference participants will receive an overview of technology resources such as GPS and GIS technologies, mapping, land appraisals and estate planning tools that they can use to enhance their property management. Participants will also receive information on attending future in-depth workshops that will be provided by this project.

Moderator:

Karen W. Craig
Cooperative Extension Program
Tuskegee University

Presenters:

Jonell Hinsey, Instructional Designer
Agricultural Information Technology Center
Tennessee State University

Joshua Idassi, Assistant Professor, Forestry
Cooperative Extension Program
Tennessee State University

E. Jenell Sargent, Associate Professor/Distance Education Coordinator
Agricultural Information Technology Center
Tennessee State University

Session 4: Finances/Financial Management (Meeting Rooms D&E)

The current crisis in the housing market reminds us that managing one's finances and enterprises such as farm businesses remains critical to facing challenges out there in the economy. There are still enormous risk, credit and other management needs that are not met particularly for low- and moderate-income individuals, businesses and communities in areas such as the Alabama Black Belt and other rural places. Tuskegee University continues to partner with USDA/Rural Business-Cooperative Service (through the Rural Business and Economic Development Program), the Federation of Southern Cooperatives, HUD-HBCU (through the Tuskegee-Macon County Community Development Corporation VITA service), Legal Service Alabama (through the Low-Income Tax Clinic), and the Alabama Asset Building Coalition and the Federal Deposit Insurance Corporation to bring risk management training, selected loan opportunities, financial literacy and tax assistance programs to individuals and start-up entrepreneurs. Participants to these sessions will be given the opportunity to obtain a free will, apply for SBA Community Express Loan, learn more about Money Smart and about where to get free assistance for filing one's taxes, etc.

Moderators:

Youssef Diabate
College of Agricultural, Environmental and Natural Sciences
Tuskegee University

Presenters:

Legal Management Workshop

Jerry Pennick
Federation of Southern Cooperatives

Miessha Thomas
Federation of Southern Cooperatives

Finance and Farm Management Issues

Tax Issues for Farmers

Noel Thompson
Tuskegee University

Banking the Unbanked

John Olsen

Federal Deposit Insurance Corporation

Volunteer Income Tax Assistance

Sheila Austin
TuskMac CDC

Session 5: An Update on USDA Programs and Resources (Meeting Room G)

Increasing the awareness of United States Department of Agriculture (USDA) programs and opportunities for the socially and economically disadvantaged persons and under-represented persons is a major goal of the USDA. Agencies such as Natural Resources Conservation Service, Farm Service Agency, the National Agricultural Statistics Service, Rural Development and Animal and Plant Health Inspection Agency are committed to providing leadership to ensure that all programs and services are made accessible to all USDA customers, fairly and equitably, with emphasis on reaching the underserved.

Moderator:

Gwen Harris
College of Agricultural, Environmental and Natural Sciences
Tuskegee University

Presenters:

Vicky Lane
USDA, Farm Service Agency

Alice Love
USDA, Natural Resource and Conservation Service

Andrew Williams
USDA, Natural Resource Conservation Service

Quinton Harris
USDA, Rural Development

Session 6: Agricultural Opportunities for Youth (Auditorium)

This session will focus on avenues to provide students with information and opportunities to discover and develop interests in areas of academic and career skills to ensure that no child is left behind. Students will be encouraged to pursue educational, financial and career planning opportunities in an environment that is safe, challenging and rewarding.

Moderator:

Nickey L. Jefferson, State Program Leader/District Extension Coordinator
Cooperative Extension Program
Tuskegee University

Presenters:

**United States Forest Service
Tuskegee University Initiative Program**
Iran Howard, Wildlife Biology Major
Jonathan Lampley, Forestry Major

**USDA/1890 National Scholars Program
Tuskegee University**
Stephon Fitzpatrick, Forestry Major

Recruitment and Scholarships
Jeremy Wilson, Admissions Counselor

USDA Farm Service Agency
Danny Lindsey, Farm Loan Manager

BENTLEY, Mark is Executive Director at Alabama Clean Fuels Coalition in Birmingham, AL. Since joining the coalition he has been helping local fleets install alternative fuel infrastructure. Among his accomplishments he has worked with Auburn University to obtain B20 to fuel the school's buses, assisting the City of Birmingham with the installation of four B20 stations and assisting in the building of an E85 site at the State Motor Pool in Montgomery.

In January 2007, Bentley was awarded the Apprentice of the Year by the U. S. Department of Energy. He is a graduate of Babson College.

CASEY, Linda has served in her present position as Alabama's State Forester since January 2007. Previously, Casey worked as manager of fiber supply for the east region of International Paper at Georgetown, SC. She was responsible for eight paper mills located in New York, Virginia, North and South Carolina, and Georgia. She also worked as associate forester for International Paper in Bay Minette, AL.

Casey holds a B.S. degree in Forestry and Wildlife Management from Virginia Polytechnic Institute and State University. She and her husband reside in Montgomery, AL.

MAST, Gary has served as Deputy Under Secretary for Natural Resources and Environment (NRE) since his selection in February 2007. The NRE mission area includes U. S. Forest Service and the Natural Resources Conservation Service (NRCS). Prior to his current position Mast served as NRCS Special Assistant and Chief of Staff, Senior Advisor to the Chief of NRCS, President of the National Association of Conservation Districts and Soil and Water Conservation District supervisor. Mast is also a sixth generation self-employed farmer from Ohio.

Among his many awards, Mast received the Ohio Department of NRCS Achievement Award, EPA District 5 Distinguished Service Award and Honorary Membership Award from Alpha Gamma Rho. Mast received his B.A. from Malone College in Ohio and is married and has two children.

POWELL, William E. (Billy) presently serves as Executive Vice President of the Alabama Cattlemen's Association. He has taught in the animal science department and served as state extension food specialist at Auburn University. He has also headed the feed division of a regional grain company. Powell has served as a director of Colonial Bank, editor of the Alabama Cattleman magazine and Executive Director of the Southeastern Livestock Exposition. He has received many awards and recognitions such as Personality of the Year by Red Angus Association of America and the youngest member inducted into the Alabama Livestock Hall of Fame.

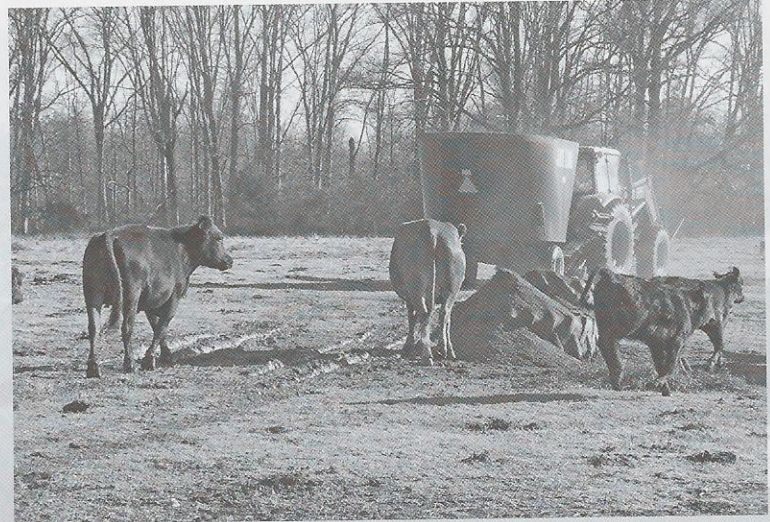
Powell received his B.S. (with honors) and Ph.D. degrees from Auburn University. He is married to Beth Crawford and they have three sons and one grandson.

ROGERS, The Honorable Mike was sworn in to the U. S. House of Representative in January 2003 and represents East Alabama's Third Congressional District. He began his service in the Alabama House of Representatives in 1994 and became House Minority Leader in 1998 during his second term. Congressman Rogers serves on many committees including the House Committee on Agriculture, House Armed Services Committee and is Ranking Member of the Homeland Security Subcommittee on Management, Integration, and Oversight.

Congressman Rogers is a graduate of Jacksonville State University and the Birmingham School of Law and have a general law practice in Anniston. He and his wife Beth are the proud parents of three children.

About the Speakers

2008 Merit



The Donald Means Family, located in Eutaw, Greene County, Alabama, has been selected as the 2008 Merit Farm Family by the Tuskegee University Cooperative Extension Program Committee.

Donald Means, one of four children, was born in Eutaw, Alabama. He attended the Eutaw Primary School and graduated from Eutaw High School in Eutaw in 1985. Donald participated in the Future Farmers of America, and 4-H Club activities. For sports, he participated in football and basketball. He received a Bachelor of Science degree in Business Administration from the University of Alabama in Tuscaloosa, Alabama. Since receiving his degree, he has attended many workshops, seminars, and conferences

dealing with beef cattle. He has been married for fifteen years to Lesia Means, and they have three children, two daughters in middle school, and one son in day care school.

The Means Family members have owned and operated their family farm (600 acres) for over five generations. They have access to 600 additional acres, a total of 1200 acres.

The major farm enterprise is beef cattle with over 250 head of brood cows and 10 bulls.

Donald actively participates in local farm related activities for Greene County as well as related State activities for

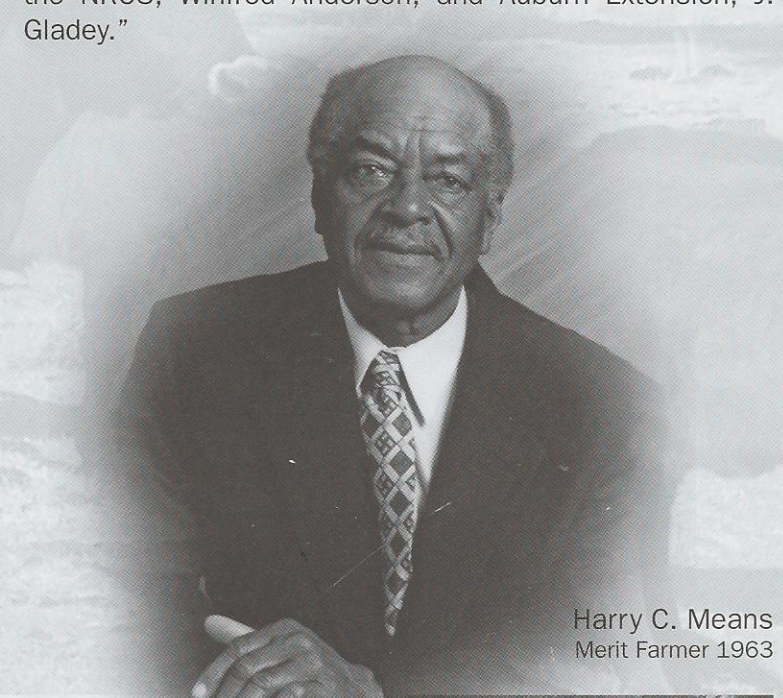
Farm

The Donald Means Family

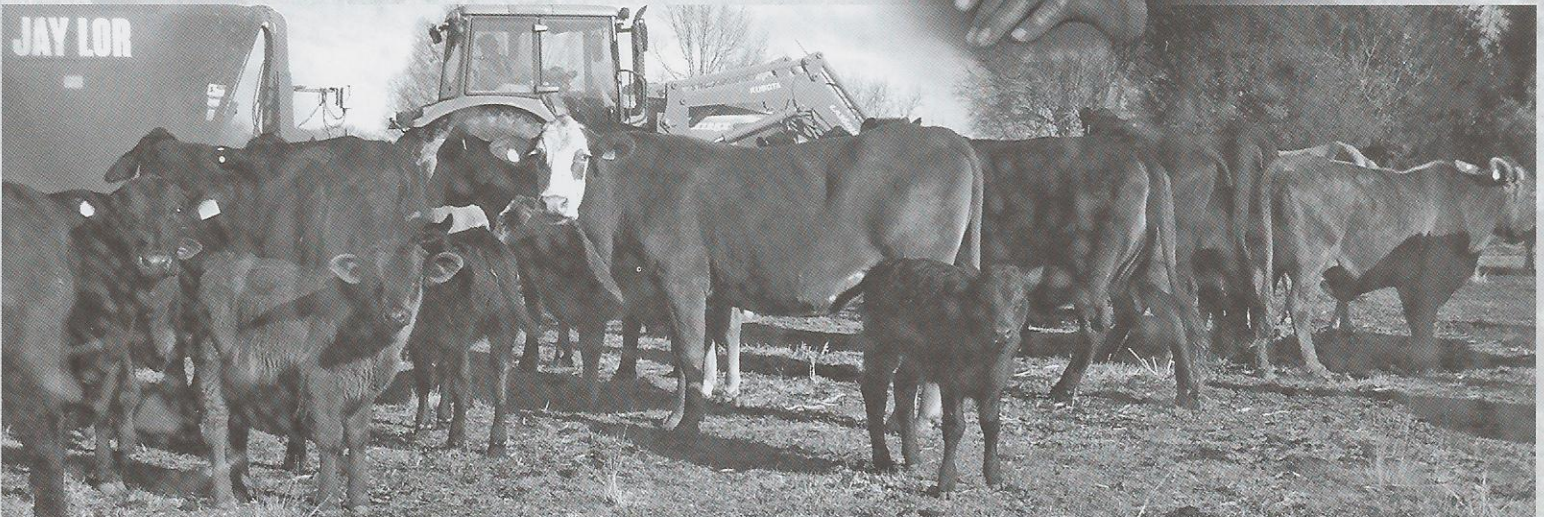
beef cattle. He is a member of the Alabama Cattlemen Association, the Southern Cooperatives, and other organizations.

Donald continues the legacy of his Father, Harry C. Means, in beef cattle farming, in receiving the Merit Farm Family Award, and in serving as a Greene County Commissioner for 9 years. Mr. Harry C. Means received the Merit Farm Family Award in 1963, and was also elected as one of the first black County Commissioners in the nation and in Greene County. Mr. Harry C. Means served as a Greene County Commissioner for 17 years. Donald cherishes the leadership of his Father.

When asked to explain his most important success in farming, his reply was: "I receive help from the Tuskegee University Cooperative Extension Program through its County Agent, Gwendolyn Johnson. Others contributing to my success are from the School of Veterinary Medicine, Dr. K. W. Newkirk and P.V. Bridges—assisted in improved conception rates (about 15 %), weaning rates (about 75 pounds per head) and best practices in herd management; the Farm Service Agency, Mrs. Mary McInnis and G. Thomas; the NRCS, Winfred Anderson; and Auburn Extension, J. Gladey."



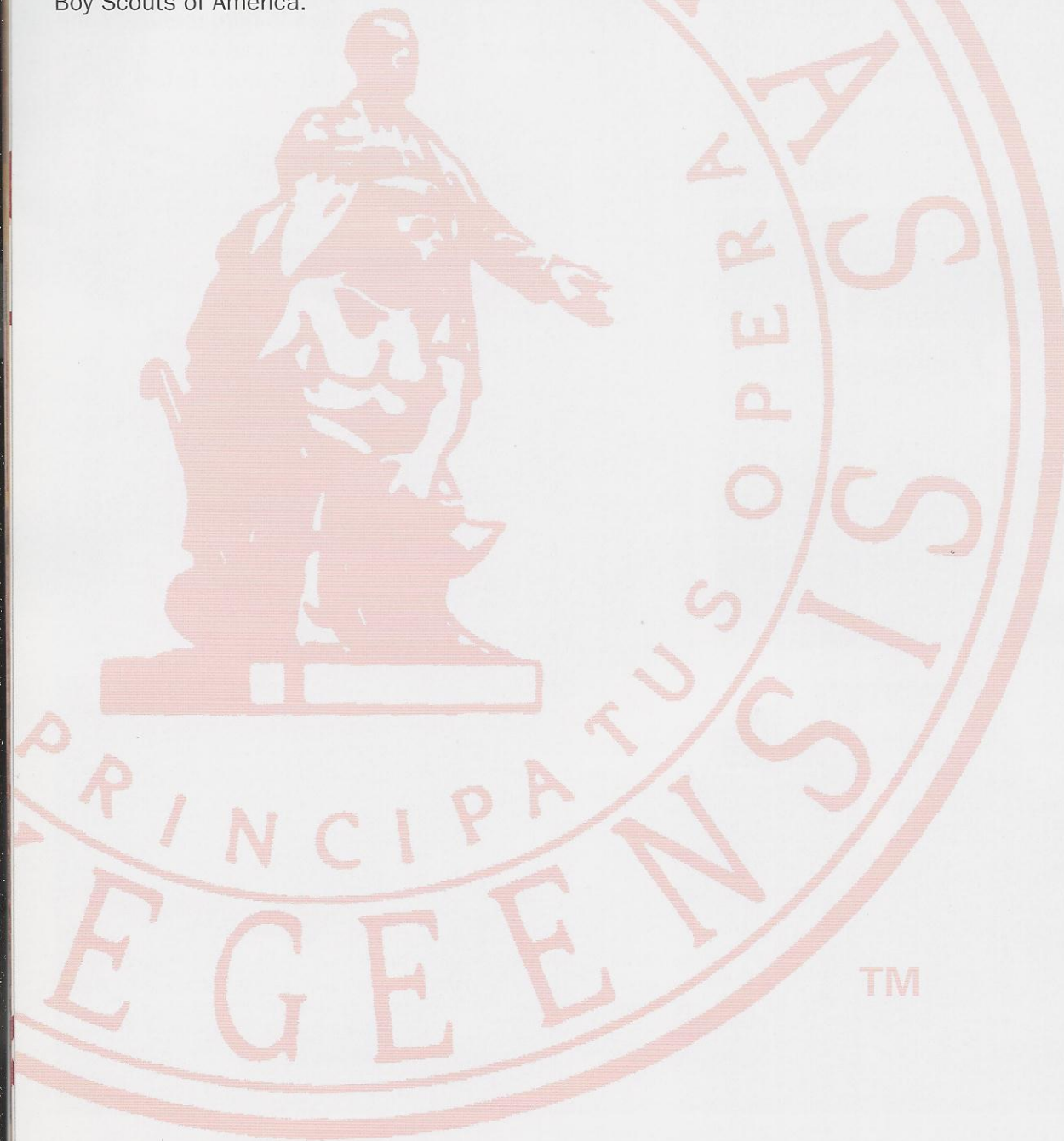
Harry C. Means
Merit Farmer 1963



T. M. CAMPBELL DISTINGUISHED LEADERSHIP AWARD

HALL, Ellis is a retired Veterinarian from the Tuskegee University College of Veterinary Medicine where he served in various capacities such as Professor, Head of the Department of Small Animal Medicine, Surgery and Radiology and Director of the Veterinary Teaching Hospital. He diligently works with Boy Scouts of America serving in many capacities. He currently serves as Chairman of the Carver District Boy Scouts. He also is a consultant to Scout Reach District of Mobile Council and provides/host venue for overnight scouts on a quarterly basis. Hall also works with many activities for low-income youth through summer camps, community service projects and other activities.

Some of the many committees he serves on are: Macon County Coalition for Community Advancement, TuskMac Community Development Corporation, Envision 20/20, Leadership Macon County, Montgomery Museum of Fine Arts, UNCF, and Macon County Coalition for Safe Environment. He has received numerous awards for his work with community services and Boy Scouts of America.



Leadership Award

SPONSORS

Cooperative State Research,
Extension and Education Service

Alabama Department of Agriculture and Industries

Animal & Plant Health Inspection Service, USDA

First South Farm Credit

Natural Resource Conservation Service, USDA

Mid-South Resource, Conservation &
Development Council, USDA

National Peanut Board

Risk Management Agency, USDA
(through Risk Management Education Project)

Rural Business-Cooperative Service, USDA
(through the Rural Business and
Economic Development Program)

PARTNERS

Alabama Cooperative Extension System
Alabama Department of Environmental Management
Alabama Farmers Federation
Alabama Farmer's Market Authority
Alabama Forestry Commission
Farm Service Agency, USDA
Federation of Southern Cooperatives
Forest Service, USDA
Southern Rural Development Council

TUSKEGEE UNIVERSITY

Cooperative Extension Program
Continuing Education Program
College of Agricultural, Environmental and Natural Sciences
College of Business and Information Sciences
College of Engineering, Architecture and Physical Sciences
College of Liberal Arts and Education
College of Veterinary Medicine, Nursing and Allied Health

COMMITTEES

Velma L. Blackwell, Chairperson
William A. Hodge, Co-Chair
Miles Robinson, Co-Chair

Program Committee: V. Blackwell, G. Lewis, S. Fitzpatrick,
A. Pierce, N. Jefferson, V. Singleton, L. Haynes, J. McBride,
Y. Wright, G. Blackmon, C. Pollard, W. Datcher

Merit Farm Family: A. Pierce*, G. Hunter, L. Pringle,
D. Threadgill

Printed Materials: K. Craig*, V. Singleton, Y. Wright

Publicity & Promotion: All County Staff, K. Craig*, G. Blackmon,
J. McBride, TU Office of Marketing and Communications

Banquet & Luncheon: E. Bonsi, J. McBride*, V. Singleton

Registration: N. Boyd, J. Brown, J. McBride*, C. Pollard,
V. Singleton, Y. Wright, P. Young, M. Morris

Fundraising/Finances: V. Blackwell*, W. Hodge, A. Pierce,
J. Brown

Evaluation and Survey: Agricultural and Resource Economics
Program, T. Hargrove*

Youth Opportunities Forum: L. Haynes*, N. Jefferson*,
M. Robinson

Risk Management Education and Rural Business Development:
N. Baharanyi*, Y. Diabate, G. Harris, M. Robinson

Audio Visual/Technology: ACES Communications Dept.,
W. Baldwin, K. Craig*, C. Pollard, R. Stephens, D. Threadgill

Awards: V. Blackwell*, V. Singleton

Exhibits/Vendors: G. Blackmon, J. McBride, V. Singleton*

Health and Wellness: G. Blackmon*, M. Austin

Conference Tours: Alabama Forestry Commission,
Federation of Southern Cooperatives, W. Hodge*, R. Smith

*Indicates Chairperson

Published by the Tuskegee University Cooperative Extension Program, in cooperation with the U.S. Department of Agriculture, Velma L. Blackwell, Administrator. The Cooperative Extension Program offers educational programs and materials to all people without regard to race, color, national origin, religion, sex, age, veteran status, or disability. It is also an Equal Employment Opportunity Employer.

Cooperative Extension

The Tuskegee University Cooperative Extension Program helps people, particularly the underprivileged residents in twelve of Alabama's Black Belt counties, to improve their lives through informal educational processes that use scientific knowledge to address their concerns and needs.

In terms of the geographical area that we serve, most of our programming occurs in twelve counties located across the area known as the Black Belt. The belt spans east-west across the central part of Alabama and is known for its dark colored soils and includes parts of sixteen counties. Tuskegee University is located in this agro-ecological zone and has historically focused its outreach in this area.

Program areas today span many subject matter disciplines due to the interrelated nature of the needs of the families and communities we serve. Currently, we conduct educational programs in the broad categorical areas of (1) Agricultural and Natural Resources, (2) Community and Economic Development, and (3) Youth and Family Life.

Although the primary focus of the Tuskegee University Cooperative Extension Program is to assist families with limited resources to improve their quality of life, the program offers its educational services to all state residents, without regard to race, color, age, national origin, religion, sex or disability.

Tuskegee University | Cooperative Extension Program
204 Morrison-Mayberry Building | Tuskegee, Alabama 36088 | 334-724-4441