

TUSKEGEE UNIVERSITY

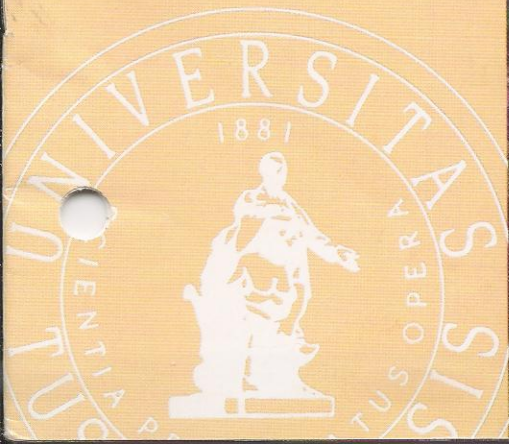
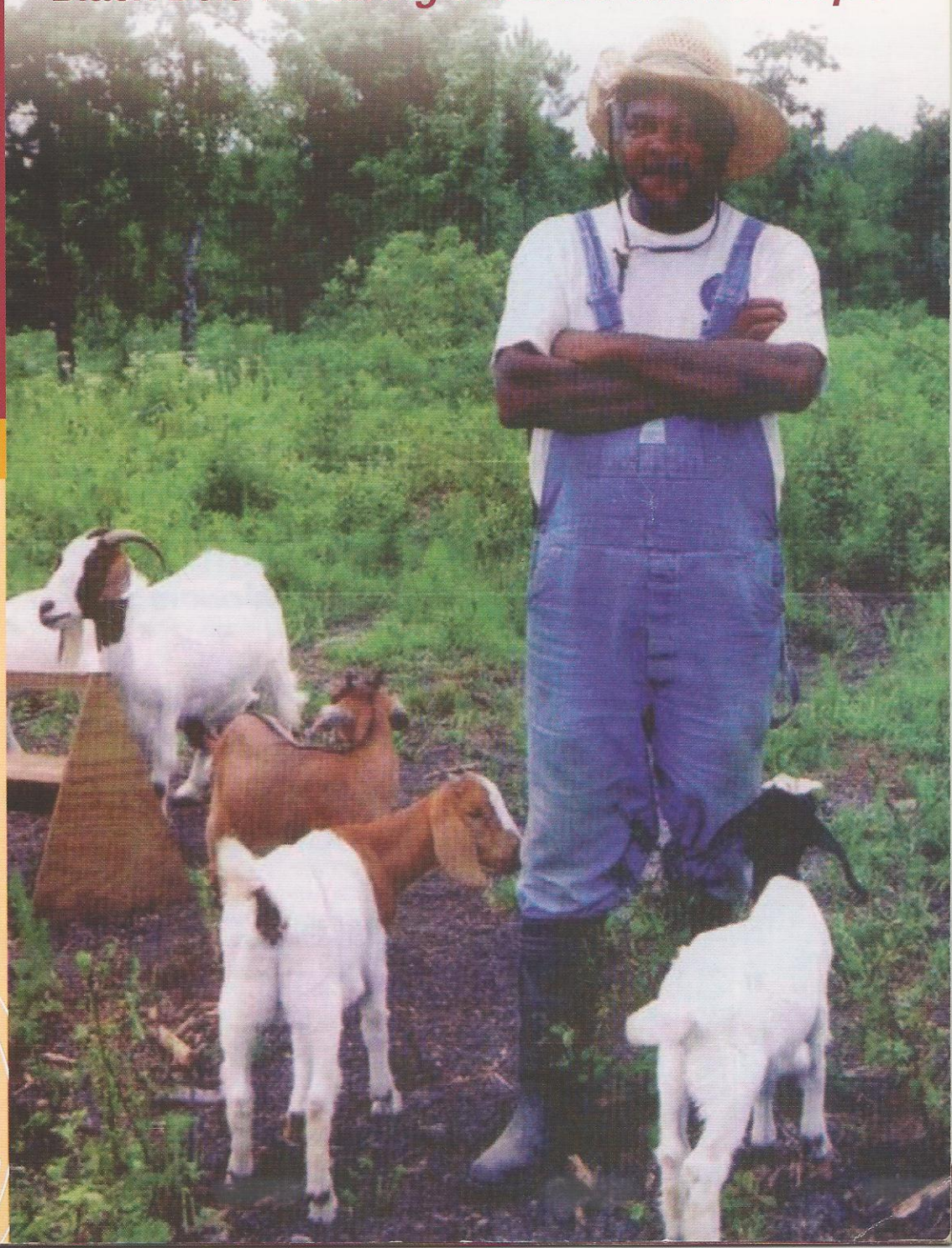
115th Annual

Farmers Conference

***“Small Scale Family Farms In the Southern
Black Belt: Nurturing the Land and Its People”***

February 22-23, 2007

Kellogg Conference Center
Tuskegee University
Tuskegee, Alabama



2007 Merit Farm Family Award



Eugene and Emma Hall Family
Emelle, Alabama

Tuskegee University Cooperative Extension Program
Sumter/Marengo Counties

Wanda Blakely, County Agent
Mary Hooks, Secretary

The first Farmers Conference was held at Tuskegee University on February 23, 1892. The purpose was to arouse public sentiment among the farmers and create a real interest in the common, mundane and practical affairs of life. The morning was spent identifying problems, while the afternoon portion of the conference focused on solutions. Today, this conference's main focus is still on the problems and solutions for small-scale farmers, landowners, and their families and communities in managing change in agriculture.

The objectives for this year are: (1) to share up-to-date information relevant to small-scale farmers and landowners involved in production of traditional and alternative agricultural products; (2) to create awareness about family health, nutritional challenges, and existing resources for rural families; (3) to provide research-based information in a consumer adaptable format; and (4) to strengthen networks and partnerships that address problems of small-scale agriculture and rural communities with respect to local, national and global markets.

1892
1893
1894
1895
1896
1897
1898
1899
1900
1901
1902
1903
1904
1905
1906
1907
1908
1909
1910
1911
1912
1913
1914
1915
1916
1917
1918
1919
1920
1921
1922
1923
1924
1925
1926
1927
1928
1929
1930
1931
1932
1933
1934
1935
1936
1937
1938
1939
1940
1941
1942
1943
1944
1945
1946
1947
1948
1949
1950
1951
1952
1953
1954
1955
1956
1957
1958
1959
1960
1961
1962
1963
1964
1965
1966
1967
1968
1969
1970
1971
1972
1973
1974
1975
1976
1977
1978
1979
1980
1981
1982
1983
1984
1985
1986
1987
1988
1989
1990
1991
1992
1993
1994
1995
1996
1997
1998
1999
2000
2001
2002
2003
2004
2005
2006
2007
2008
2009
2010
2011
2012
2013
2014
2015
2016
2017
2018
2019
2020
2021
2022
2023
2024
2025
2026
2027
2028
2029
2030

THURSDAY, FEBRUARY 22, 2007

8:30 a.m.Registration (Conference Registration Desk)

9:00 a.m. - 4:30 p.m.Exhibits and Health Fair Open

9:00 a.m. - 1:00 p.m.Natural Resources Management Tour (Ballroom A)
**Caravan departs for tour of University managed forest properties at 10:00 a.m.*

Presiding Pamela Madzima, Forestry Program Assistant
Federation of Southern Cooperatives

Presenting Ronald C. Smith, Extension Forester
Tuskegee University Cooperative Extension Program

1:00 p.m. - 2:30 p.m.Lunch (Ballroom B)

2:00 p.m. - 4:30 p.m.Health and Wellness Forum (Meeting Rooms D&E)

Reproductive Health, Wellness and Cancer Prevention

This session is open to both men and women and will focus on the importance of preventative care in reproductive health. Breast and prostate wellness will be examined to educate participants on specific methods of identifying potential symptoms and risks.

Presiding Genece Blackmon, Program Coordinator, Project EXPORT
Tuskegee University Continuing Education Program

Presenting Beatrice H. Scruggs, Director
B and D Cancer Care Center, Inc., Tuskegee, Alabama

Vivian Carter, Associate Professor of Sociology
Tuskegee University College of Liberal Arts & Education

Rory Stephens, County Agent, Barbour/Bullock Counties
Tuskegee University Cooperative Extension Program

Lawrence McRae, Director
McRae Prostate Cancer Awareness Foundation, Tuskegee, Alabama

Community Testimonials

2:00 p.m. - 3:30 p.m.Annual Meeting of the Tuskegee University
Cooperative Extension Program State Extension Advisory Council (Meeting Room A)

5:30 p.m. - 6:15 p.m.Tuskegee Enology Club Reception (Atrium)

6:30 p.m. Thomas Monroe Campbell Memorial Banquet (Ballrooms B & C)

Presiding The Honorable Thomas E. Jackson
Alabama State Representative, 68th District

Speaker The Honorable Jim Folsom, Jr., Lieutenant Governor
State of Alabama

FRIDAY, FEBRUARY 23, 2007

7:30 a.m.Registration (Conference Registration Desk)

9:00 a.m. - 2:00 p.m.Exhibits and Health Fair Open

9:00 a.m. - 10:45 a.m.Opening Session (Auditorium)

PresidingVelma L. Blackwell, Administrator
Cooperative Extension Program
Tuskegee University

InvocationClifford Jones, Pastor
Greater Peace Missionary Baptist Church
Opelika, AL

Greetings & WelcomeBenjamin F. Payton, President
Tuskegee University

The Honorable Myron Penn
Alabama State Senator, 28th District

Introduction of the SpeakerBenjamin F. Payton

SpeakerThe Honorable Gale Buchanan, Under Secretary
USDA Research, Education and Economics
Washington, DC

PRESENTATION OF MERIT FARM FAMILY AWARD

10:45 a.m. - 11:00 a.m.Break (Auditorium Foyer)

11:00 a.m. - 1:00 p.m.Concurrent Sessions

1:00 p.m. - 2:30 p.m.Merit Farm Family Luncheon (Ballroom)

PresidingTeresa Smiley, Deputy Commissioner
State of Alabama, Department of Agriculture and Industries

SpeakerThe Honorable Artur Davis
7th District of Alabama, United States Congress

Session 1: Small Farmer Opportunities and the United States Department of Agriculture (Meeting Rooms D&E)

"My people are destroyed for lack of knowledge..." Hosea 4:6, often rings true in underserved economically disadvantaged communities. Increasing the awareness of United States Department of Agriculture (USDA) programs and opportunities for the socially and economically disadvantaged persons and under-represented persons is a major goal of the USDA. Agencies such as Natural Resources Conservation Service, Farm Service Agency, Rural Development and Animal and Plant Health Inspection Agency are committed to providing leadership to ensure that all programs and services are made accessible to all USDA customers, fairly and equitably, with emphasis on reaching the underserved.

Moderator:

Jorge J. Hersel, District Ranger
National Forest Service

Presenters:

O.W. Hester, Area Veterinarian in Charge
USDA/ Animal Plant and Health Inspection Service/Veterinary Services

Steve Musser, Assistant State Conservationist
USDA Natural Resources Conservation Service

John Dasher, Agricultural Statistician
USDA National Agricultural Statistics Service

Tammy Truett, Public Affairs Specialist
USDA Forest Service

Billy Joe Johnson, District Director
USDA Farm Service Agency

Chris Harmon, Director of Community and Business
USDA Rural Development

Session 2: Youth in Agriculture: Loans, Grants and Scholarships (Auditorium)

This session will focus on avenues to provide students with information and opportunities to discover and develop interests in areas of academic and career skills to ensure that no child is left behind. Students will be encouraged to pursue educational, financial and career planning opportunities in an environment that is safe, challenging and rewarding.

Moderator:

Lenora Haynes, Agricultural Liaison Officer
USDA Office of Civil Rights

Presenters:

Youth Loan Program

Danny Lindsey, Farm Loan Manager
USDA Farm Service Agency

USDA Forestry Incentive Program

Deidra Smith, Forest Service Liaison Officer
USDA Forest Service/Civil Rights
Staff Unit

USDA/1890 National Scholars Program

Alex Grant and Charles Woodard USDA, 1890 National Scholars
Tuskegee University

Loans, Grants and Scholarships for the College Bound Family

Matt Gaddis, Student Loan Representative
Bancorp South, Auburn, AL

Tuskegee University Recruitment/Scholarships

Jeremy Wilson, Admissions Council/Recruiter

Session 3: Financing Businesses and Financial Literacy in Low-Income Communities (Meeting Room B)

There are still enormous credit and other financial needs that are not met for low- and moderate-income individuals, businesses, and communities in areas such as the Alabama Black Belt and other rural places. Tuskegee University is strengthening its partnerships with many organizations such as USDA and SBA (through the Rural Businesses and Economic Development Program), Legal Service Alabama (through the Low-Income Tax Clinic), IRS (through TuskMac CDC VITA Center), and the Alabama Asset-Building Coalition and the Federal Deposit Insurance Corporation (FDIC) to bring selected loan opportunities, financial literacy and tax assistance programs to people and start-up entrepreneurs with little or no collaterals, banking experience, etc. Participants to this workshop will be given the opportunity to apply for SBA Community Express Loans, learn about the Money Smart-based financial education opportunities closest to them, and make contacts needed for assistance with tax problems and filing for low income residents.

Moderator:

Ntam Baharanyi
Professor and Extension Economist, Tuskegee University

Presenters:

SBA Community Express Loans

Gwen Harris and Nyanza Duplessis, Community Development Specialists
Tuskegee University

Money Smart

John Olsen, Program Outreach Specialist
FDIC, Montgomery, AL

VITA Center Services

Antionette Cunningham, Community Business Development Specialist
TuskMac CDC, Tuskegee, AL

Low-Income Tax Legal Assistance

Carolyn Gaines-Varner, Attorney-at-Law
Legal Services Alabama

Session 4: Wills, Estate Planning and Personal Finance Management for Financially Distressed Families (Meeting Room F&G)

There is an inordinate amount of land loss among minority land owners due to lack of wills, land management and inattention to property taxes, etc. Quite often low income and minority farm families find themselves in positions not to be able to transfer their lands to their children due to lack of understanding about wills, estate planning and other asset management needs. This session will update participants about the importance of having the right tools in place to avoid continued land loss as well as methods to protect property and other assets among African Americans and other minority families.

Moderator:

Miles Robinson
Tuskegee University Cooperative Extension Program

Presenter:

Jerry Pennick
Federation of Southern Cooperatives

Session 5: Small Farm Cooperative Marketing and Value Added Product Development (Meeting Room A)

Small farms throughout the Alabama Black Belt are working together to improve farm incomes through cooperative marketing. Youth are participating in projects that teach the knowledge, skills, and abilities needed to be successful in business, specifically agriculturally based businesses. The creation of a small farm marketing and packaging facility will enable even more opportunities for producers to supply a high volume of high value contracts. With guaranteed markets for key crops, producers can experiment with crop mixes and be entrepreneurial by adding value to the products they grow.

Moderator:

George Paris, Director of Agricultural Promotions,
Alabama Department of Agriculture and Industries

Presenters:

Seedless Watermelon Project

Cornelius Key, Project Coordinator
Federation of Southern Cooperatives/Land Assistance Fund

Plasticulture (Marketing and Grading)

Harold McLemore, Marketing Specialist
Alabama Department of Agriculture and Industries

Local Harvest Website for Small Farms

Charlotte Ham, Economic Development Specialist
Tuskegee University Experiment Station

SPECIAL FEATURE

Assessment of the Sweetness Preferences of African-Americans for Sweet Potato-Based Dishes (Conference Room A)

Objective

The objective of this study is to determine the sweetness preferences of African-Americans for the base of a common sweet potato pie/casserole, in terms of the amount of sugars added to each recipe. This evaluation is designed to: **1.** Check the acceptability of a lower-sugar sweet potato pie/casserole base in order to produce recipes for dissemination that have less sugar (calories) than most recipes, and **2.** Increase the consumption of orange vegetables for nutritional benefits while still maintaining its acceptability as a reasonable-calorie food

Background/Justification

According to the USDA "Dietary Guidelines for Americans 2005" recommendations, the consumption of at least two to three cups of vegetables is needed daily. On a weekly basis, vegetables are grouped according to color, type, and nutritional value in five groups—dark green vegetables, orange vegetables, dry beans and peas, starchy vegetables, and other vegetables—and intake recommendations are made for each group. The group of orange vegetables has a recommendation of two cups per week, and is an excellent source of vitamin A, vitamin C, and potassium. The group includes acorn squash, butternut squash, carrots, hubbard squash, pumpkin, and sweet potatoes. Of these vegetables only two, carrots and sweet potatoes, are available fresh, year-round.

Sweet potatoes were determined to be an "excellent source" (providing greater or equal to 20% of RDA) of vitamin A, vitamin C, and potassium, providing significant health benefits. However, similar to dark green vegetables ("greens"), they may often be served in a manner that is not reasonably healthy, including too many calories and/or fats. Sweet potatoes in African-American household may often be served as a side or dessert dish, in the forms of a pie or a casserole. Included in the common household recipes for these dishes would be sweeteners that may be the primary adjustable calorie source. These sweeteners include any combination of white sugar, light or dark brown sugar, molasses, corn syrup, etc.

Methods

A **taste test** (sensory evaluation) will be conducted to evaluate the general sensory preference of African-Americans in terms of sweetness. Study participants will use a test taste to **evaluate three** formulations of a sweet potato pie/casserole base.

ABOUT THE SPEAKERS



FOLSOM, JR., JAMES ELISHA, popularly known as "Little Jim", is Lieutenant Governor for the State of Alabama. He was the governor of Alabama from 1993 to 1995. Born in Montgomery, Alabama, he is the son of legendary two-term Alabama governor James E. "Big Jim" Folsom, Sr. A graduate of Jacksonville State University, he presently serves as a trustee. Folsom was elected to the Alabama Public Service Commission in 1978, and re-elected in 1982. He served as Alabama Lieutenant Governor from 1986 to 1993 and took over as governor from H. Guy Hunt when he was removed from office due to state ethics law violations. As governor of Alabama, Folsom led efforts to recruit Mercedes-Benz in locating its first manufacturing plant outside of Germany in Alabama. In October 1993 it was announced that Alabama had beaten 30 other states for the coveted industry and opened the door for future automotive plants to locate in the state.

Lieutenant Governor Folsom is married to the former Marsha Guthrie. They have two children. He is an Episcopalian, and was an investment banker with the firm of Raymond James & Associates.



BUCHANAN, GALE was confirmed by the U. S. Senate as Under Secretary for USDA Research, Education, and Economics (REE). Prior to his appointment Buchanan served as dean and director emeritus of the College of Agricultural and Environmental Sciences at the University of Georgia until 2005. Earlier in his career, he served for 20 years on the Auburn University faculty before moving to Georgia as associate director for the Georgia Agricultural Experiment Station and resident director of the Coastal Plain Experiment Station.



DAVIS, ARTUR was sworn in as a member of the United States House of Representatives in 2003, representing the Alabama's 7th Congressional District. A native of Montgomery, Alabama, Congressman Davis graduated magna cum laude from Harvard University and Cum Laude from Harvard Law School. Prior to being elected Congressman, he worked as an intern at the Southern Poverty Law Center, a civil rights lawyer and as an assistant United States Attorney.

Davis has emerged as a leader on issues related to housing, education, and health care. Some of the committees he serves on are: House Committee on the Budget, House Committee on Financial services, House Committee on the Judiciary, Subcommittee on the Constitution Civil Rights and Civil Liberties, Subcommittee on Crime Terrorism and Homeland Security and House Committee on Ways and Means.

T. M. CAMPBELL DISTINGUISHED LEADERSHIP AWARD



JOHN F. KNIGHT, JR., Special Assistant to the President for Alabama State University, was elected to the House of Representative, District 77, in 1993. He serves on the Board of Directors for the Kershaw YMCA, the Montgomery Housing Authority, the Montgomery Improvement Association, the Family Sunshine Center, the Southern Development Council, Inc., the Retired Senior Volunteer Program, and the Cleveland Avenue YMCA. He is the Chairman of the Montgomery County Democratic Conference, and is a member of the Montgomery County Democratic Executive Committee.

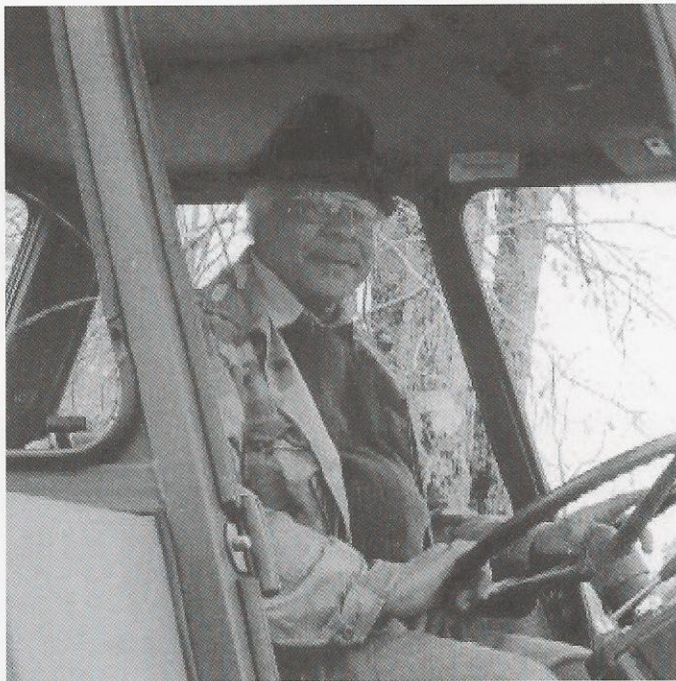
Representative Knight received his B. S. Degree, with Honors, in Business Administration from Alabama State University. He is the proud father of two children, Tamara and Tehrik.

2007

MERIT

EUGENE HALL FAMILY

The Eugene Hall Family, located in Sumter County, Alabama, has been selected as the 2007 Merit Farm Family by the Tuskegee University Cooperative Extension Program Committee.



Eugene Hall, one of 12 children, was born in Birmingham, Alabama. He attended the Carrie A. Tuggle Elementary School, and graduated from Parker High School in 1956. He studied Business, Math and other related courses at Syracuse Community College in 1966-67.

The Hall Family, which includes his wife Emma and five children, have owned and operated their family farm since 1999. The land has been in the family for approximately 55 years. The major crops grown on the farm are: tomatoes, watermelons, okra, collards, turnips, lima beans, egg plants, peas, cucumbers, garlic, cabbages, squash, cantaloupe, and broccoli.

Herbs grown are: basil, thyme, and parsley. Eugene has diversified his farm with 30 goats, 18 cows, over 350 chickens, three hives and five boxes of honeybees.



Mr. Hall actively participates in farm related activities for Sumter County. Among these are: Greene/Sumter Counties Farmers' Market, Vice President

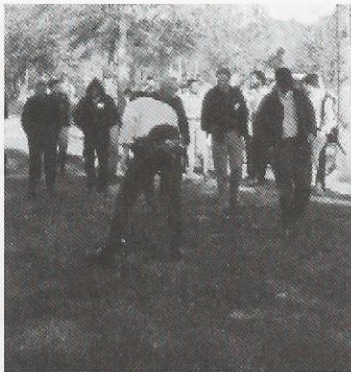


for West Alabama Farmers Association, participant in the Heifer International Grazing Mentor Group, member of the

FARM

Federation of Southern Cooperative Land Association Fund, affiliation with the Worldwide Honey Bee Cooperative and technical service provider for NRCS (Natural Resources Conservation Service).

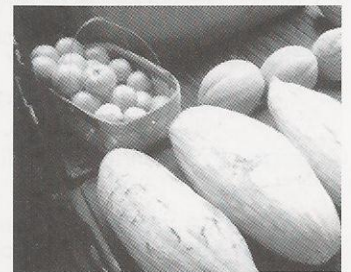
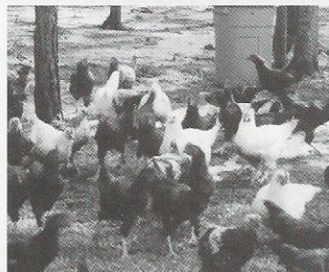
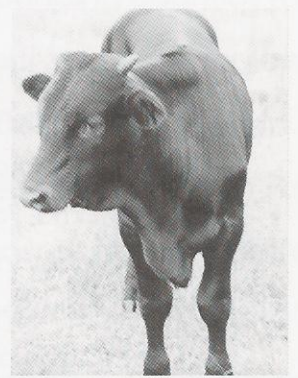
Mr. Hall participates in the plasticulture project with the Tuskegee University Cooperative Extension Program, having 2.5 acres of plasticulture himself, and with NRCS,



seven acres. He has assisted 39 people in getting approval of plasticulture in West Alabama. In the Spring 2006 issue of **Minority Landowner Magazine**, Eugene and Emma were featured in the article, "Discovering the Wealth that Lies in the Land," pp. 14-15. Also, they were included in the **Land Assistance Fund's Annual Report for 2002-2003**, "Empowering Communities to Preserve the Land" noting their success.

When asked to explain his most important success in farming, Mr. Hall replied,

"constructing my personal land as a demonstration site for interested farmers." He maintains that "the information provided at meetings and conferences he attends on farming and implementing what he learns," contributes to his success.



SPONSORS

Cooperative State Research,
Extension and Education Service

Alabama, Department of Agriculture and Industries

Animal & Plant Health Inspection Service, USDA

First South Farm Credit

Natural Resource Conservation Service, USDA

Mid-South Resource, Conservation & Development
Council, USDA

National Peanut Board

Risk Management Agency, USDA (through Risk
Management Education Project)

Rural Business-Cooperative Service, USDA (through the
Rural Business and Economic Development Program)

PARTNERS

Alabama Cooperative Extension System

Alabama Department of Environmental Management

Alabama Farmers Federation

Alabama, Farmer's Market Authority

Alabama Forestry Commission

Farm Service Agency, USDA

Federation of Southern Cooperatives

Forest Service, USDA

Southern Rural Development Council

TUSKEGEE UNIVERSITY

Cooperative Extension Program

Continuing Education Program

College of Agricultural, Environmental
and Natural Sciences

College of Business and Information Sciences

College of Engineering, Architecture
and Physical Sciences

College of Liberal Arts and Education

College of Veterinary Medicine, Nursing and Allied Health

COMMITTEES

Velma L. Blackwell, Chairperson

Program Committee:

V. Blackwell, G. Lewis, William Hodge, A. Pierce,
N. Jefferson, V. Singleton, L. Haynes, M. Robinson,
J. McBride, Y. Wright, S. Fitzpatrick, G. Blackmon, C. Pollard

Merit Farm Family:

W. Baldwin, V. Blackwell, W. Hodge, G. Paris, A. Pierce*

Printed Materials:

K. Craig*, V. Singleton, Y. Wright

Publicity & Promotion:

All County Staff, K. Craig*, G. Blackmon, J. McBride,
TU Office of Marketing and Communications

Banquet & Luncheon:

E. Bonsi*, J. McBride, V. Singleton

Registration:

N. Boyd, J. Brown, J. McBride*, C. Pollard, V. Singleton,
Y. Wright, P. Young

Fundraising/Finances:

V. Blackwell*, W. Hodge, A. Pierce, J. Brown

Evaluation and Survey:

Agricultural and Resource Economics Program,
T. Hargrove*

Youth Opportunities Forum:

L. Haynes, N. Jefferson, M. Robinson

Risk Management Education and Rural Business Development:

N. Baharanyi*, Y. Diabate, N. Duplessis, C. Ham*, G. Harris
M. Robinson

Audio Visual:

ACES Communications Dept., W. Baldwin, K. Craig*,
D. Eaves, C. Pollard, R. Stephens

Awards:

V. Blackwell*, V. Singleton

Exhibits/Vendors:

G. Blackmon, J. McBride, L. Haynes, N. Jefferson*

Health and Wellness:

G. Blackmon, *R. Walters, B. Jones

Natural Resources Management:

Alabama Forestry Commission, M. Cole, Federation of
Southern Cooperatives, W. Hodge, Ron Smith*

**Indicates Chairperson*

Published by the Tuskegee University Cooperative Extension Program, in cooperation with the U.S. Department of Agriculture, Velma L. Blackwell, Administrator. The Cooperative Extension Program offers educational programs and materials to all people without regard to race, color, national origin, religion, sex, age, veteran status, or disability. It is also an Equal Employment Opportunity Employer.

| History and Purpose |

The Annual Farmers Conference evolved in 1892 out of a need to improve the conditions of rural black farmers in the South. Having just gone through slavery, black farmers in the South had a wealth of social, economic, educational and morale problems that desperately needed attention.

After observing these conditions upon his arrival at Tuskegee, Booker T. Washington developed and implemented monthly group meetings for the farmers. Those monthly group meetings of approximately 75 people were the stepping stones to the first Annual Farmers Conference, held in 1892, which drew a crowd of over 400 farmers and professional agriculture workers from all areas of the rural South.

The Annual Farmers Conference represented not only the pioneering spirit of Tuskegee University, but the real beginning of agricultural extension in the South. Historical milestones associated with this conference include: the appointment of Thomas Monroe Campbell as the first extension agent in the

United States, the development of Tuskegee University's movable school, and the establishment of the agricultural experiment station and cooperative extension program.

Since the appointment of Campbell in 1906, Cooperative Extension at Tuskegee University grew from one county agent covering Macon and surrounding counties to 12 agents serving 12 counties in a region known as the Black Belt of Alabama. Extension educators offer assistance in a variety of program areas such as youth leadership development, environmental health and water quality, alternative agricultural enterprises, economic development, forestry and natural resources, health and nutrition, and family well-being.

The goal of the annual farmers conference is to enhance the overall quality of life for our constituents and their families and, where possible, impact in a positive way the opportunities which are available.

Cooperative Extension

Tuskegee University | Cooperative Extension Program | 204 Morrison-Mayberry Building | Tuskegee, Alabama 36088 | 334-724-4441

The Tuskegee University Cooperative Extension Program helps people, particularly the underprivileged residents in twelve of Alabama's Black Belt counties, to improve their lives through informal educational processes that use scientific knowledge to address their concerns and needs.

In terms of the geographical area that we serve, most of our programming occurs in twelve counties located across the area known as the Black Belt. The belt spans east-west across the central part of Alabama and is known for its dark colored soils and includes parts of sixteen counties. Tuskegee University is located in this agro-ecological zone and has historically focused its outreach in this area.

Program areas today span many subject matter disciplines due to the interrelated nature of the needs of the families and communities we serve. Currently, we conduct educational programs in the broad categorical areas of (1) Agricultural and Natural Resources, (2) Community and Economic Development, and (3) Youth and Family Life.

Although the primary focus of the Tuskegee University Cooperative Extension Program is to assist families with limited resources to improve their quality of life, the program offers its educational services to all state residents, without regard to race, color, age, national origin, religion, sex or disability.